

# JKBMS Smart Active Balance BMS

JK-PB1A16S10P

JK-PB1A16S15P / JK-PB2A16S15P

JK-PB1A16S20P / JK-PB2A16S20P

Specification and operation manual





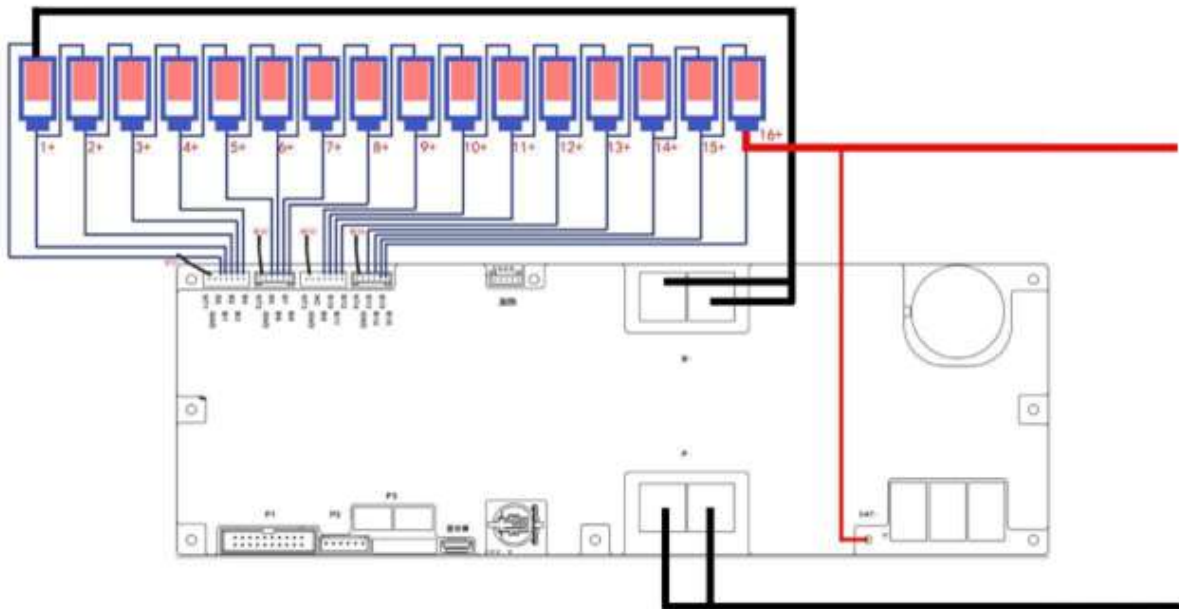
### BMS update firmware process

- 1、 Connect bms and battery correctly according to bms operation instructions..... 3
- 2、 Install our software on the computer----jk-bms-monitor-2.1.0.15-setup..... 4
- 3、 Keep the firmware that needs to be updated in the computer in advance ..... 4
- 4、 Open JK-BMS-monitor(Prepare an RJ45 usb cable, adapter board and computer) . 4
- 5、 According to the adapter board, set the device id ..... 5
- 6、 Set the device id and Click Connect..... 6
- 7、 Click “ about ” , check the bms model ..... 6
- 8、 Click three in the upper-right corner and click upload fireware. .... 7
- 9、 Select the firmware saved in step 3, and select the corresponding firmware according to your model,click open,Start Installation ..... 8
- 10、 Click Start updating..... 8
- 11、 Updated successfully, OK..... 8
- 12、 Click Settings to find UART1 Protocol No. 1,Select the corresponding inverter brand and click "send".....9
- 13、 Set up.....9

## 1.Connect bms and battery correctly according to bms operation instructions

### Wiring diagram

There are strict sequence requirements for the power-on of the protection plate. First weld B- , P-,B +, P +, and sequentially plug in the battery sampling line connector from low to high. After power-on, press the key to activate it. Load or charger can only be added after all connecting wires are installed. When removing, unplug the charger or load First, remove the battery sampling line connector in sequence from high to low, and finally remove B +, P +,B-, P-

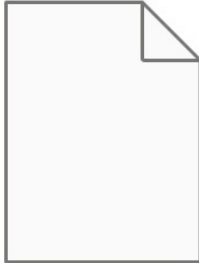


## 2. Install our software on the computer

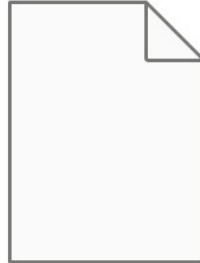
jk-bms-monitor-setup



## 3. keep the firmwar that needs to be updated in the computer in advance



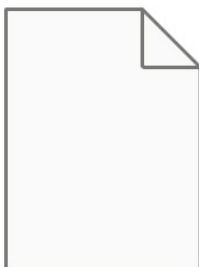
JK-PB1A16S10P.jkbms



JK-PB1A16S15P.jkbms



JK-PB1A16S20P - jkbms



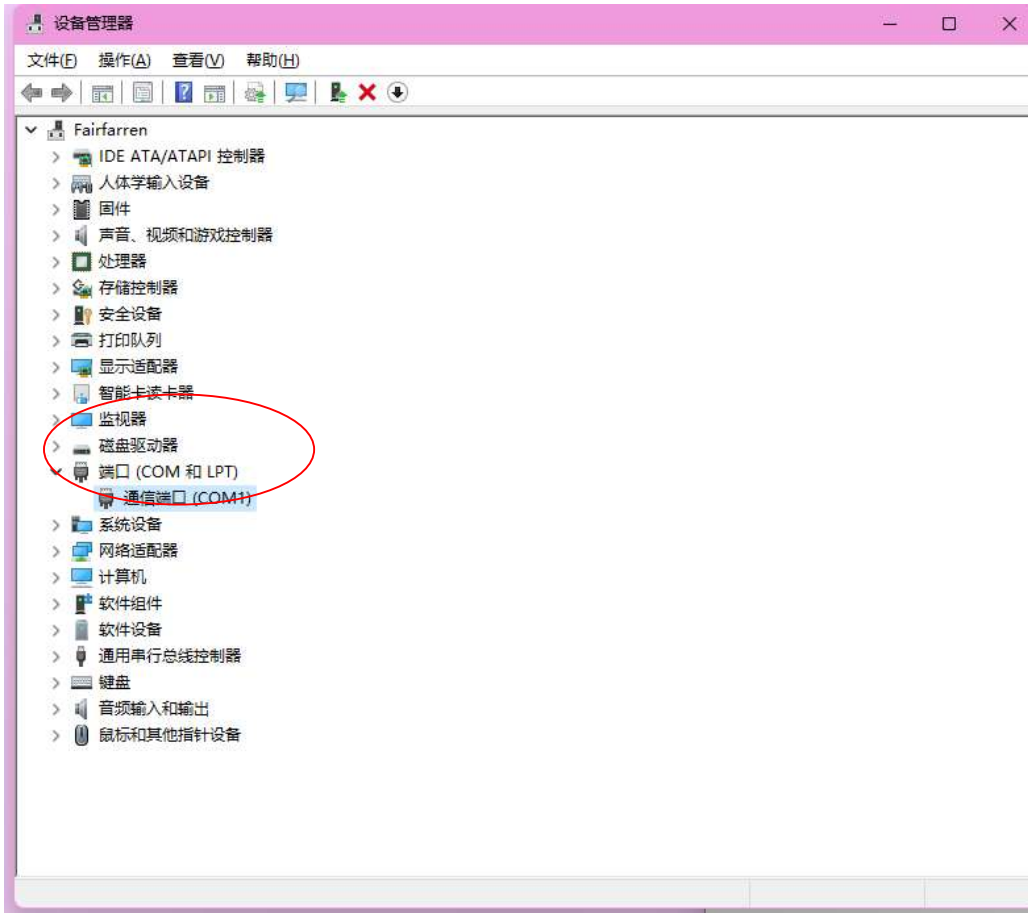
JK-PB2A16S15P.jkbms



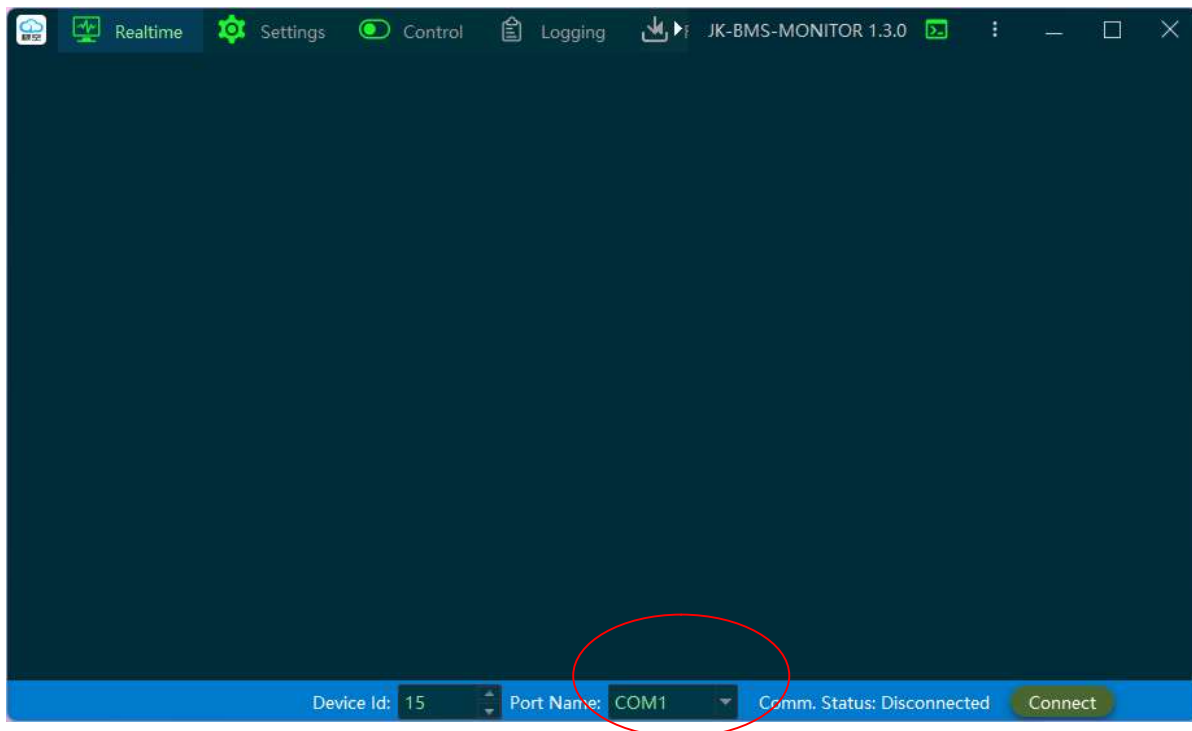
JK-PB2A16S20P.jkbms

#### 4. Check work before linking

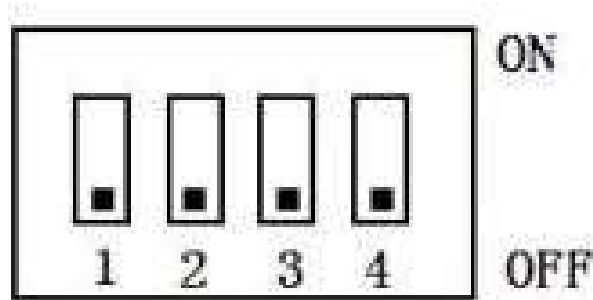
Open Device Manager using the shortcut keys WIN+X on the computer  
Check the PORT code.



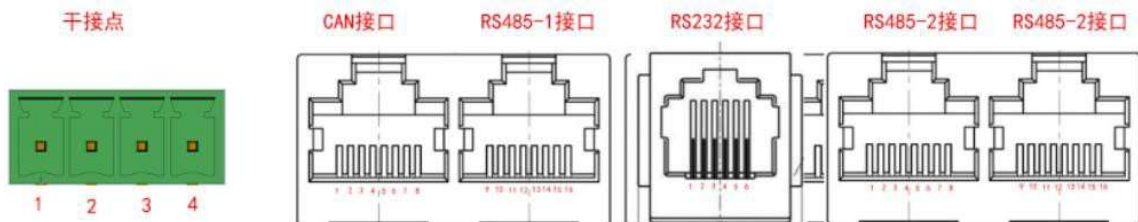
Confirm that the port values of the computer device manager and MONITOR are the same



## 5、 Set the device id and Click Connect

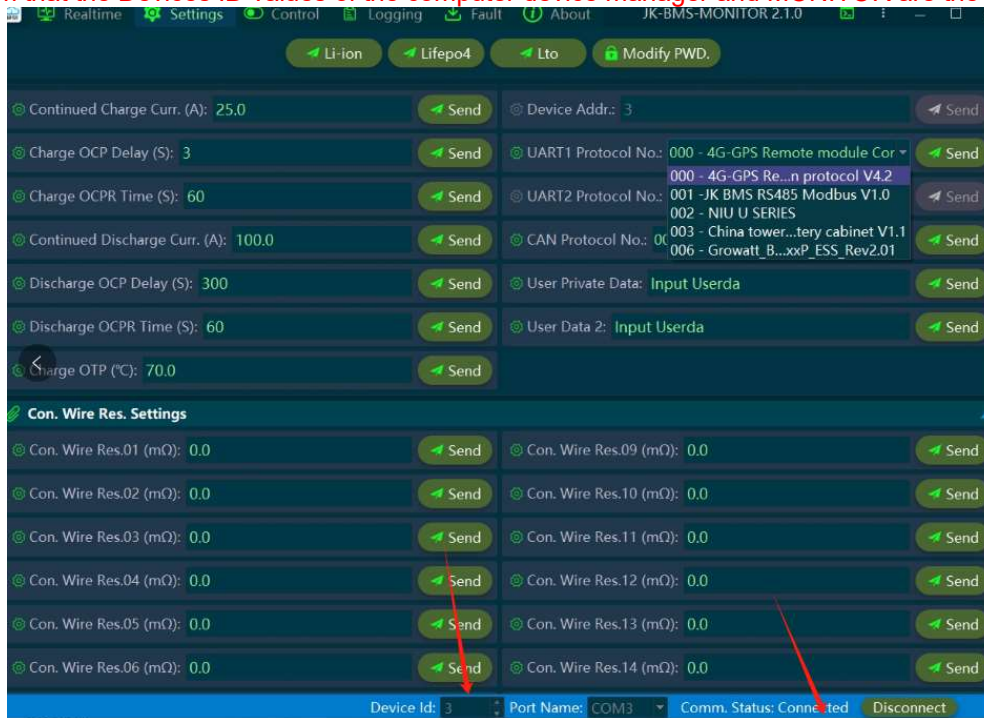


| Address | Dial switch position |     |     |     |
|---------|----------------------|-----|-----|-----|
|         | 1                    | 2   | 3   | 4   |
| 0       | OFF                  | OFF | OFF | OFF |
| 1       | ON                   | OFF | OFF | OFF |
| 2       | OFF                  | ON  | OFF | OFF |
| 3       | ON                   | ON  | OFF | OFF |
| 4       | OFF                  | OFF | ON  | OFF |
| 5       | ON                   | OFF | ON  | OFF |
| 6       | OFF                  | ON  | ON  | OFF |
| 7       | ON                   | ON  | ON  | OFF |
| 8       | OFF                  | OFF | OFF | ON  |
| 9       | ON                   | OFF | OFF | ON  |
| 10      | OFF                  | ON  | OFF | ON  |
| 11      | ON                   | ON  | OFF | ON  |
| 12      | OFF                  | OFF | ON  | ON  |
| 13      | ON                   | OFF | ON  | ON  |
| 14      | OFF                  | ON  | ON  | ON  |
| 15      | ON                   | ON  | ON  | ON  |

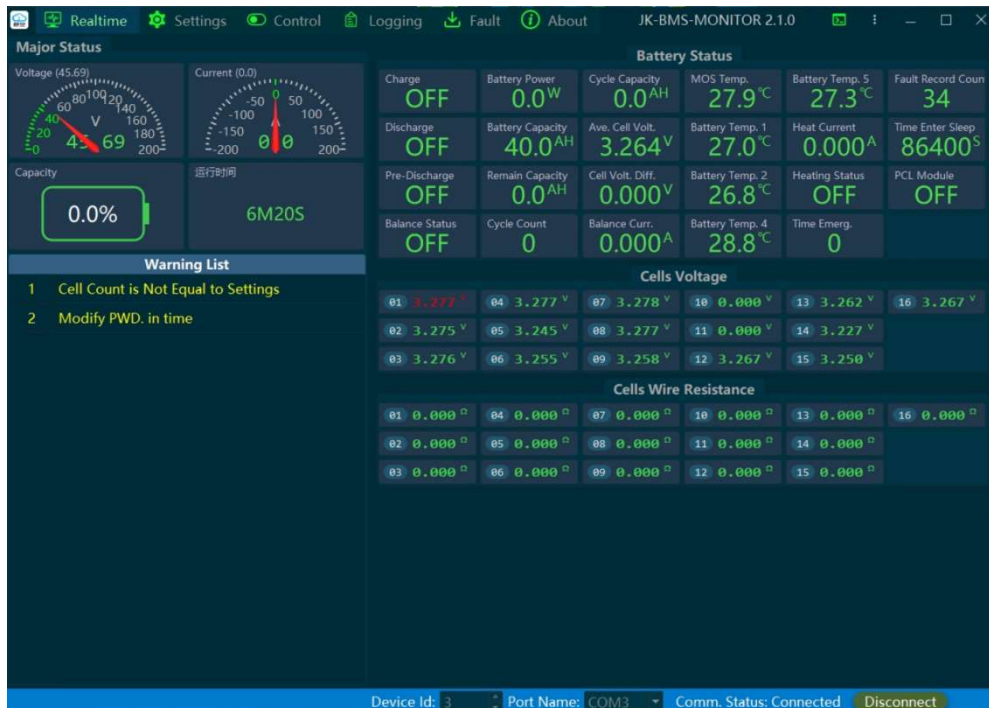


## 6. According to the adapter board, set the device id

Confirm that the Devices ID values of the computer device manager and MONITOR are the same

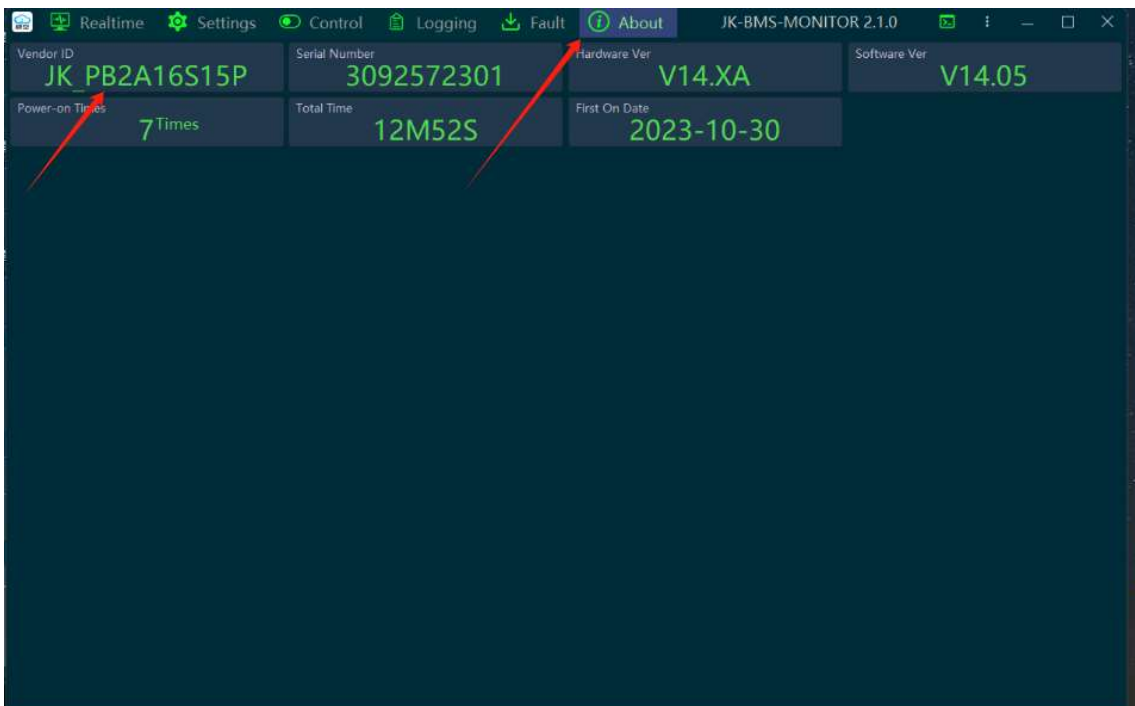


## 7. Open JK-BMS-monitor (Prepare an RJ45 usb cable, adapter board and computer)

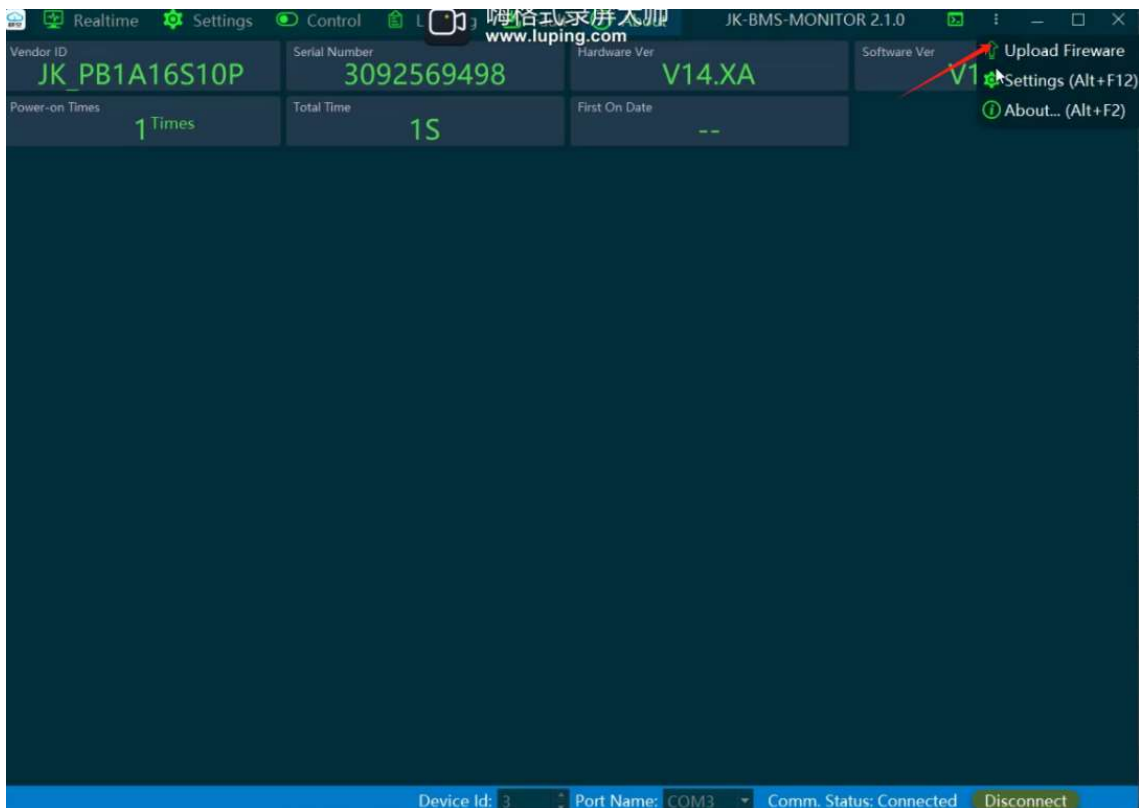




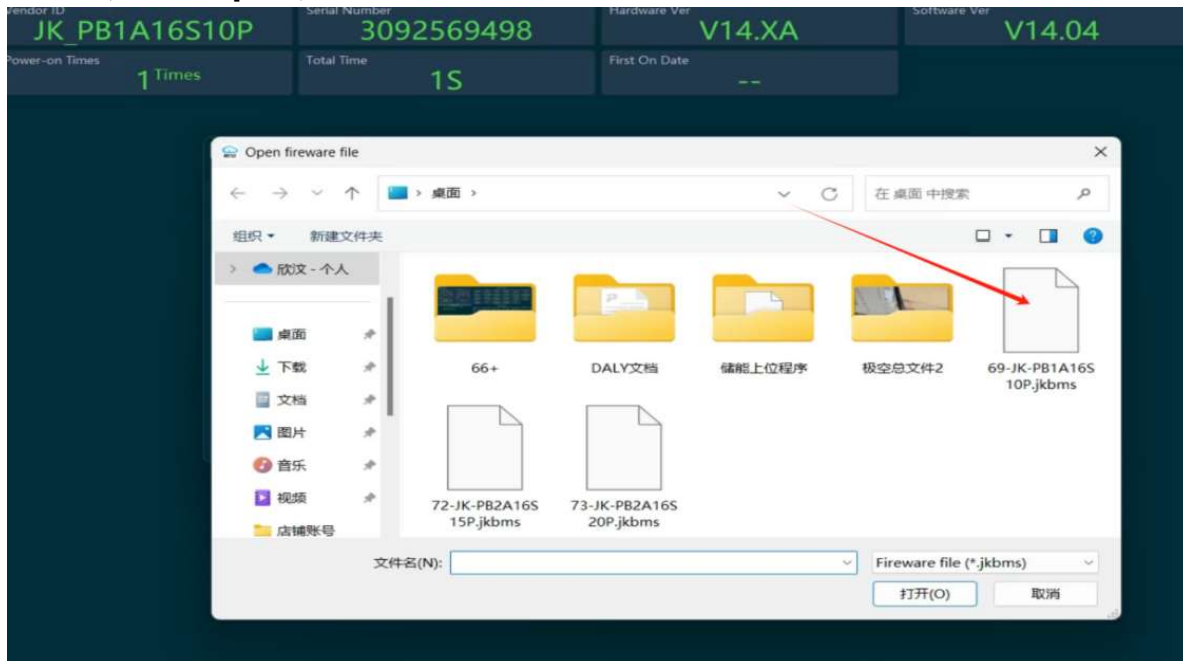
## 8. Click “ about ” , check the bms model



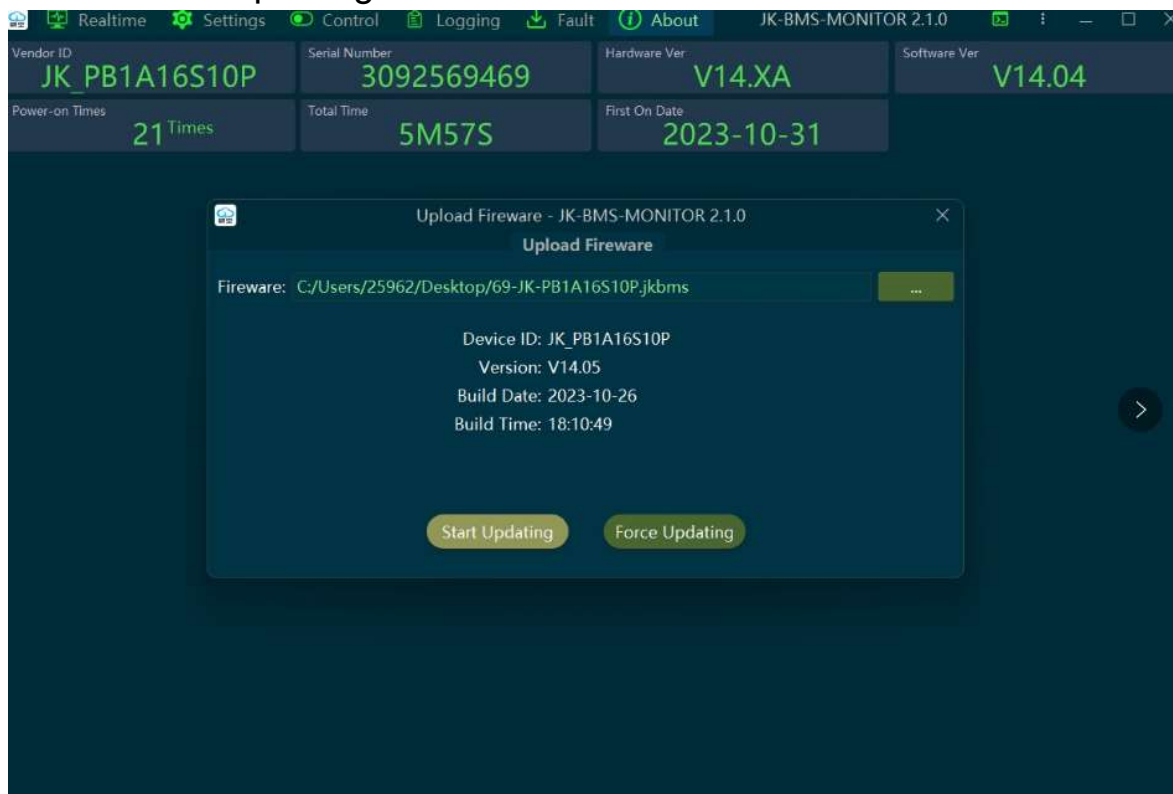
## 9. Click three in the upper-right corner and click upload fireware.



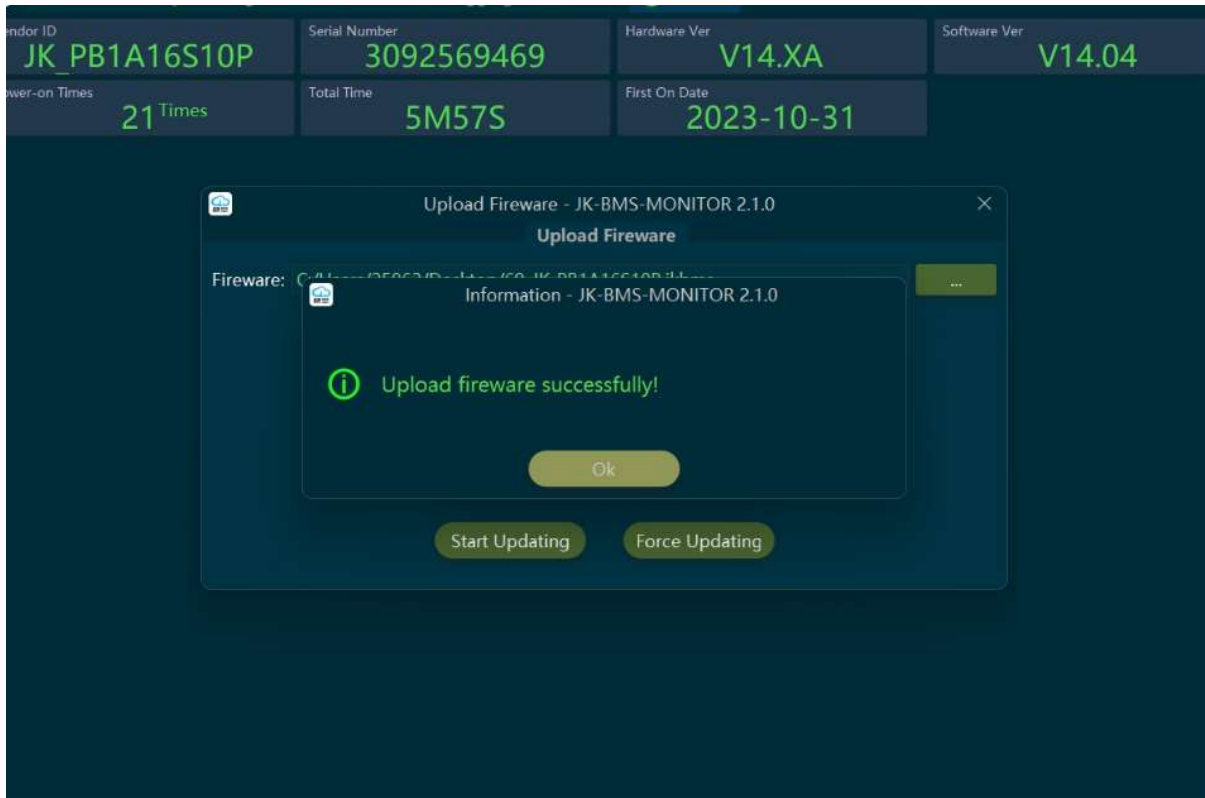
**10. Click Upload Fireware - JK-BMS-MONITOR click upload fireware  
 Select the firmware saved in step 3,  
 and select the corresponding firmware according to your  
 model,click open,Start Installation**



**11. Click Start updating**



## 12. Updated successfully, OK



## 13. Click Settings to find UART1/CAN Select the corresponding inverter brand and click "send"



## 14. Other